

COMMISSIONERS ORDINANCE NO. O-2020-021

AN ORDINANCE OF THE BOARD OF COMMISSIONERS OF THE CITY OF NEWPORT, KENTUCKY AMENDING SECTION 9.33 (C) AND RELATED SITE SPECIFIC SIGN LOCATIONS OF THE OFFICIAL ZONING ORDINANCE OF THE CITY OF NEWPORT, KENTUCKY CONCERNING THE SIGN OVERLAY DISTRICT (SOD).

WHEREAS, the City of Newport, Kentucky Planning and Zoning Commission, upon application for a text amendment, held a public hearing upon such request after giving notice as required by KRS Chapter 424 on September 22, 2020 (as part of hearing PZ-20-05); and,

WHEREAS, the City of Newport, Kentucky Planning and Zoning Commission during the public hearing approved the request and made recommendation to the Board of Commissioners of the City of Newport, Kentucky to approve the requested text amendment; and,

WHEREAS, the Board of Commissioners of the City of Newport, Kentucky hereby agrees with the recommendation City of Newport Planning and Zoning Commission,

NOW THEREFORE BE IT ORDAINED BY THE CITY OF NEWPORT, KENTUCKY:

SECTION I

That Section 9.33 (C) of the Official Zoning Code, as set forth below, are hereby amended to read, as follows:

SECTION 9.33 SIGN OVERLAY DISTRICT (SOD)

C. BOUNDARIES OF SIGN OVERLAY DISTRICT: The boundaries of the Sign Overlay District are the same as the boundary of the RFD zone, west of Washington Street, as depicted on the official zoning map. ~~Riverboat Row on the North, Washington Street on the East, Third Street on the south and Columbia Street on the West.~~

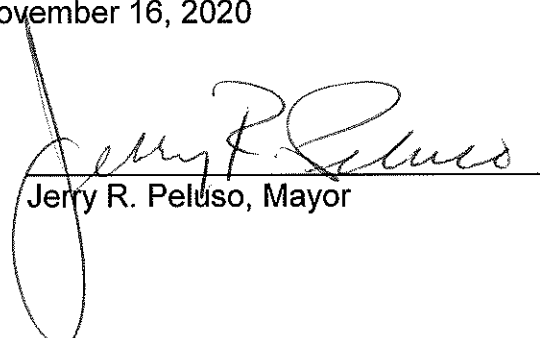
SECTION II

That as a result of the change to the boundaries are set forth in Section I hereof, with regard to the Ovation Music Venue, Section 9.33 is hereby further amended to include the Site Specific Signs Ovation locations (3) with supporting text, as set forth in Exhibit "A", attached hereto and made a part hereof as if fully set forth.

SECTION III

That this Ordinance shall be signed by the Mayor, attested to by the City Clerk, recorded, published and effective upon publication.

PASSED: First reading October 19, 2020
PASSED: Second reading November 16, 2020



Jerry R. Peluso, Mayor

ATTEST:



City Clerk

PUBLISHED: Online October 16, 2020 on the City website, www.newportky.gov, with URL reference published in the Campbell County Recorder November 2, 2020 as allowable per KRS 424.145.

EXHIBIT "A"

-Site Specific Signs Ovation

Location: North Facade Music Venue Building

Facade Coverage: Sign[s] must occur within the defined shaded area.

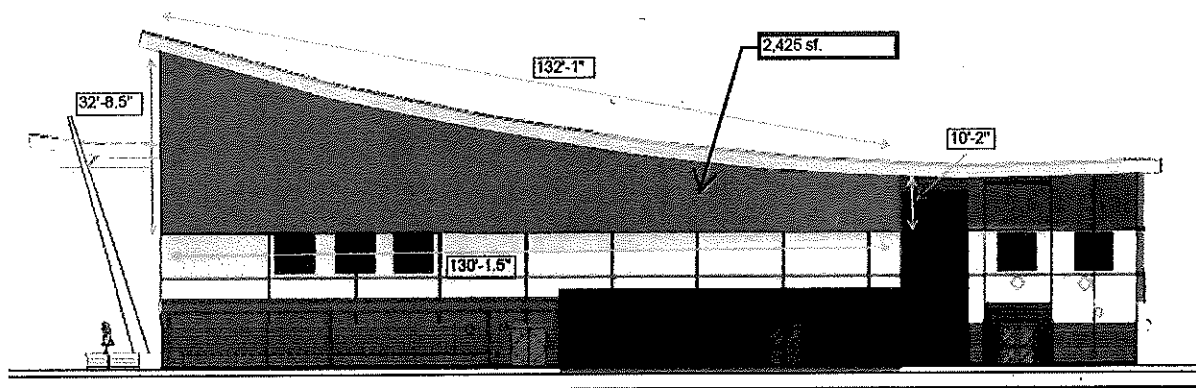
Roof Line notes: No sign will extend above roofline

Approved Sign Types: Facia mounted, LED Illuminated cabinet signs, illuminated channel letters, projected light, sign with 3D extension, blade sign, projecting signs.

Sizes: Blade or projecting signs may not exceed 44 square feet in size, and are limited to one per street facing facade. Blade/Projecting signs are not restricted to the defined shaded area.

Facade Coverage: Sign[s] will not exceed 35% of the square footage of the buildings' north-facing facade and must occur within the defined shaded area.

North Façade Signage Area: 2,425 square feet



Location: West Facade Music Venue Building

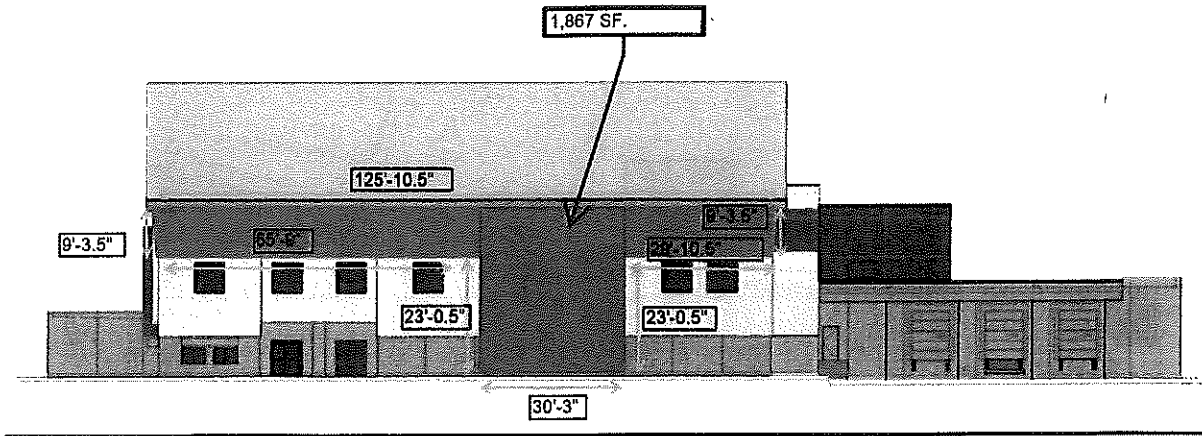
Facade Coverage: Sign[s] must occur within the defined shaded area.

Roof Line notes: No sign will extend above roofline

Approved Sign Types: Facia Mounted, LED Illuminated cabinet signs, illuminated channel letters.

Facade Coverage: Sign[s] will not exceed 50% of the square footage of the buildings' west-facing facade and must occur within the defined shaded area.

West Façade Signage Area: 1,867 square feet



Location: South Facade Music Venue Building

Facade Coverage: Sign[s] must occur within the defined shaded area.

Roof Line notes: No sign will extend above roofline

Approved Sign Types: Facia Mounted, LED Illuminated cabinet signs, illuminated channel letters.

Facade Coverage: Sign[s] will not exceed 35% of the square footage of the buildings' south-facing facade and must occur within the defined shaded area.

South Façade Signage Area: 3,937 square feet

