

General James Taylor Park Updates

4.13.2023



NEWPORT
KENTUCKY

Archeological Study

Step 1: Geophysical Phase

Ground Penetrating Radar (GPR) works by emitting a pulse of electromagnetic energy into the ground. The idea of this pulse works like a radio wave, which travels at different velocities when moving through various materials. The electromagnetic pulse is dependent on the electrical characteristics of the material it encounters, and the variations in the return signal identify a shift in material. When the pulse passes from one material to another, there is a change in wave velocity. That change in velocity returns to the antenna and identifies a possible object. As the archeologist continues to move across the grid, a more complete picture can be formed, including the depth of an artifact. Archeologist can use this to “see” what may be underground.



Professionals must be very careful to create their grid before using GPR. They also need a relatively flat, clear surface. The equipment must be used in straight, evenly spaced lines to make the best individual transects to be used later.

The City has signed a contract with Western Kentucky University, and is working with NKU faculty, staff and students on this project. The agreed amount cost is \$35,000. The City is still waiting on a map of the exact location in the park where this study will happen. This typically takes 7 – 8 days.

Archeological Study

Step 1: Geophysical Phase

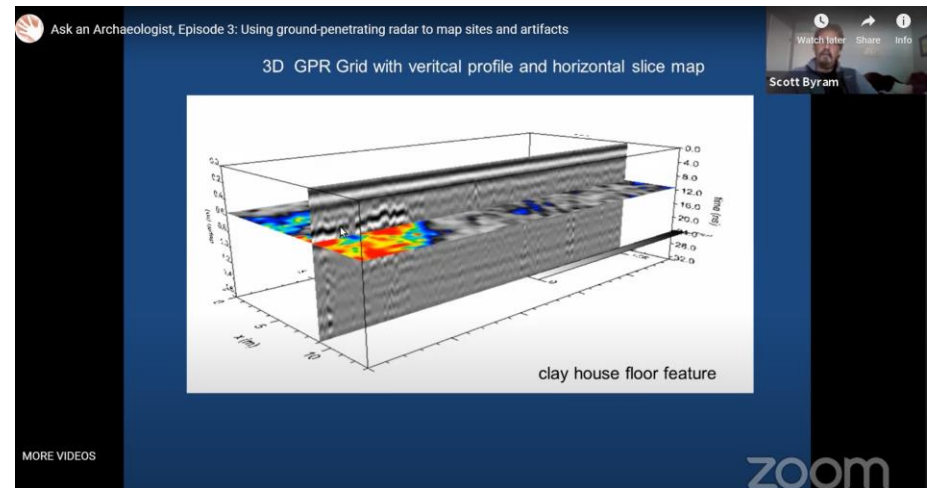


Archeological Study

Phase 2: Processing the Information and Ground Truthing

First the data collected during the geophysical phase is run through various computer programs and “Spliced”. This process could take 4 – 6 weeks. This will allow the experts to identify the anomalies as potential places to search. Once identified, those locations will be marked for “ground truthing”.

Screen shot of Ask an Archeologist, UC Berkley. The link to this YouTube video will be sent via email after the meeting.



Once locations of possible anomalies have been identified, the team from WKU and NKU will return to GJTP. With the help of the Public Works Department, they will use backhoes to dig trenches. They will then excavate for any potential artifacts. Any found artifacts will either go to WKU or the Behringer-Crawford Museum.

Archeological Study

Logistical Points

- The name and type of GPR used will be the GSSI SIR4000 coupled with a 350-megahertz HyperStacking digital antenna. These will be mounted on a GSSI Utility Scan Pro cart system.
- Public Works will cover all trenches with metal plates while experts are not actively excavating the locations.
- We will organize a day for the public to watch and learn from the experts during the ground truthing period.
- The City will display a sign warning that KRS 164.705-164.735 and KRS 164.990 makes it unlawful to willfully damage archaeological sites to protect the area.
- After the report has been completed, we will host another meeting to discuss what was found.



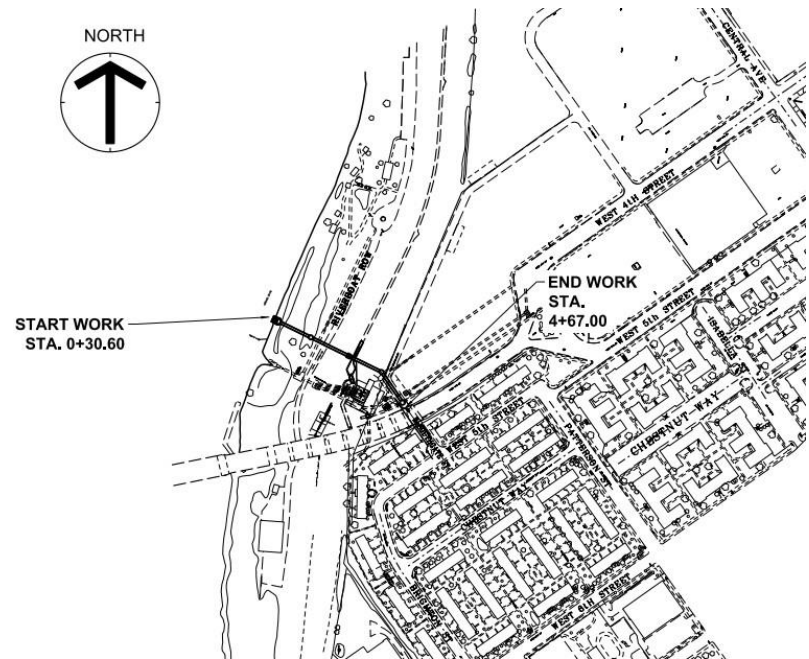
Environmental Stewardship Project Funding

This funding will be used to plant trees. The City is legally forbidden from digging until the Archeological Study has been completed. As soon as we are allowed and weather permits, we will be planting trees. As a reminder, we would like to plant 3-4 trees in these two vicinities. For a total of 6-8 trees around the picnic benches and play area. The trees will not be invasive species, be able to withstand Ohio River flooding, not interfere with powerlines, and be able to grow in difficult soil.



KY 9 Stormwater Outfall at 4th St Pump Station

The purpose of this project is to reduce Combined Sewer Overflow (CSO). This becomes a problem when there is a large amount of stormwater, and the system becomes overwhelmed. The result is a combination of stormwater, untreated human and industrial waste, oil and grease, metal, floating debris, and other harmful pollutants into the waterways. In 2005, SD1 and the EPA entered into a consent decree to comply with the federal law Clean Water Act of 1972 to reduce COSs and Sanitary System Overflows (SSO) by 2025.



Partners: SD1, KYTC, and the Army Corp of Engineers
Expected Construction: July – October 2023

Ecosystem Restoration

Table 24. Implementation Schedule

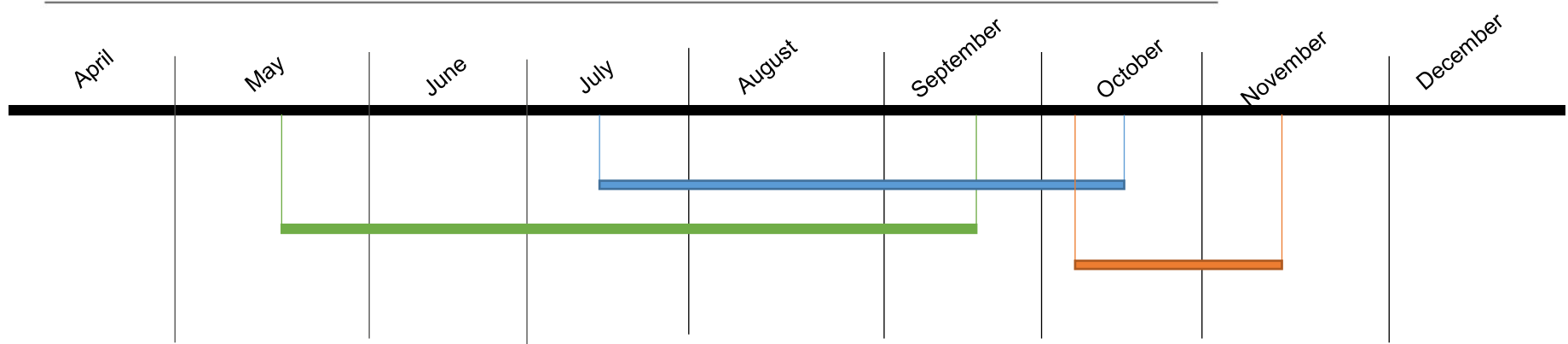
NKY - P2# 471176			
Task	Start	Finish	Duration
Draft DPR	2-Apr-18	31-May-18	59
Draft DPR - DQC Review	1-Jun-18	15-Jun-18	14
Draft DPR - Legal / Policy Review	4-Jun-18	22-Jun-18	18
Public Review (before conversion)	25-Jun-18	25-Jul-18	30
ATR	25-Jun-18	2-Nov-18	130
MSC / HQUSACE Review - Draft DPR	28-Jun-18	17-Sep-18	81
GI Study Termination Memo - Draft	15-Dec-18	20-Dec-18	5
GI Study Termination Memo - OC Review	20-Dec-18	14-Jan-19	25
GI Study Termination Memo - Front Office Review	14-Jan-19	28-Jan-19	14
GI Study Termination Memo - COL Gant Signature		28-Jan-19	
GI Study Termination Memo - LRL Transmit to MSC		28-Jan-19	
GI Study Termination Memo - MSC Review / Approval	28-Jan-19	19-Mar-19	50
GI Agreement Termination Complete		19-Mar-19	
CAP SEC 1135 FCSA - Draft / Negotiation	20-Mar-19	27-Mar-19	7
CAP SEC 1135 FCSA - Sponsor Signs		5-Mar-19	
CAP SEC 1135 FCSA - USACE Signs		3-Apr-19	
GI Study Cost Share Record Closeout	22-Aug-19	24-Oct-19	63
Receive federal funds		9-Apr-19	
Draft DPR - DQC Review	29-Apr-19	16-Sep-19	140
Draft DPR - Legal Review	5-May-2019	6-June-2019	30
Release Draft DPR for Concurrent MSC / Public Review		19-Sep-19	
Public Review	23-Sep-19	23-Oct-19	30
ATR (after conversion)	23-Sep-19	08-Jan-20	
ATR Certification	08-Jan-20	30-Jul-20	
Draft Final DPR - DQC Review	20-Jan-20	01-Jul-20	
Draft Final DPR - Legal Review	25-Apr-21	03-Jul-21	
Final DPR – Policy Review	28-May-21	04-Jun-21	
Final Report Signed		14-Jul-21	
PPA - Draft / Negotiation	15-July-21	29-Nov-21	30
PPA - Sponsor Signs		Nov-21	
PPA - USACE Signs		March-22	
Plans and Specifications - Start		31-March-22	
Real Estate Certification		26-Jul-2024	
ATR Certified Construction Plans and Specifications		Oct-22	
Construction Contract Award		Oct-24	
Implementation Complete		Summer 2025	

We are stuck at PPA – USACE Signs March 2022, meaning we are now a year behind. The last request from the USACE was for a signed PPA by August 18th, 2022. We did that. Unfortunately, we have not heard from the USACE since then and the document expires after 3 months. The USACE has also asked us to buy land, which was previously not required.

Due to these and other issues, Bellevue has decided to pull out the project. The Southbank Partners are having ongoing discussions of hiring a company or non-profit to do this project instead of the USACE. The funding associated with this project belongs to Southbank, not the individual Cities.



Current Timeline



Archeological Study

May 1st: Start of the Archeological Study

May 1st – 14th: Geophysical Phase

May 14th – Mid-June: Processing data from GPR

Mid-June – August: Archeologists on site looking for artifacts, public opportunity to learn

September: Report Completed

October: Meeting to explain what they found

KY 9 Stormwater Outfall at 4th St Pump Station

April/May: Site preparation begins

July – October: Construction

Environmental Stewardship Project Funding

October – November: plant trees

River Sweep



Saturday, April 22, 2023

10:00AM - 12:00PM



General James Taylor Park

100 Riverboat Row, Newport



Supplies provided

Grabbers, gloves, + bags




FREE T-SHIRT!

Register here



University of Kentucky
College of Agriculture,
Food and Environment
Cooperative Extension Service



A photograph of two beagles standing on a paved waterfront promenade. The dog in the foreground is looking up and barking. In the background, there is a river, a bridge, and a city skyline featuring a prominent domed building. A thought bubble is superimposed over the scene.

I have
questions

We will do our best to answer anything tonight. You can email additional questions to lobrien@newportky.gov